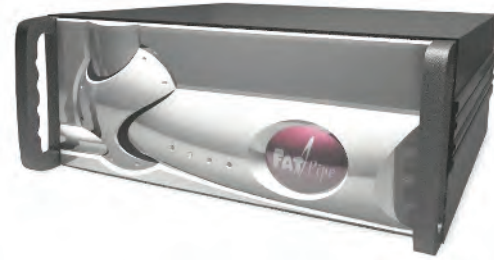


# MPVPN

FatPipe MPVPN takes any VPN and makes it nine times more secure and three times more reliable, redundant and fast. MPVPN comes in three standard speeds with higher speeds available upon request.



## UP TO 2 GBPS SPEEDS

### MANAGEMENT

- Policy Routing
- FatPipe Quality of Service (QoS)\*
- Basic Firewall
- Compression
- Graphical User Interface
- Network configuration
- Emergency paging and e-mail alerts
- Automatic failover
- Bandwidth Reporting
- SNMP Ready
- FatPipe Site load Balancing\*

### SECURITY

- Inherent NAT-based Firewall
- Inbound Policy
- FatPipe VPN
- FatPipe MPSec

### LOAD BALANCING

- Round Robin
- Response Time
- Fastest Route
- Weighted
- Spillover Load Balancing
- On Failure

### WARRANTY

- 1 year full hardware warranty
- Extended Hardware Warranty

### NETWORK INTERFACE

- Four 10/100/1000 Ethernet Interface
- Additional WAN port(s) upgrade available
- Supports 3-G Wireless
- AIndustry standard 4U and 1U rack-mount chassis - high reliability, fast cooling and Industrial design



FatPipe Networks  
4455 South 700 East, 1st Floor, Salt Lake City, Utah 84107  
www.fatpipeinc.com • Info@fatpipeinc.com  
Tel: 800.724.8521 • 801.281.3434 • Fax: 801.281.0317

FatPipe Networks™, MPVPN®, and MPSec™ are trademarks or registered trademarks of Ragula Systems Development Company d.b.a. FatPipe Networks. All other product names mentioned herein are trademarks of their respective owners. Partner benefits and offerings subject to change © FatPipe Networks 2012 \*Patented and additional patents pending. US Patent Numbers: 6,253,247; 6,295,276; 7,269,143; 6,775,235; 7,406,048; 7,444,506; 6,493,341 and 7,877,510. US Registered Trade Mark # 2,236,238

# FatPipe MPVPN

Efficient and Cost effective Solution for Business Continuity, Disaster Recovery & Contingency Planning, and Extreme Availability for your VPN

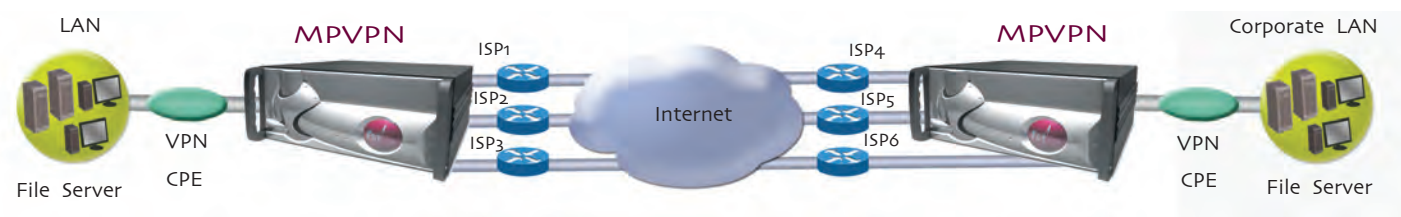
MAKE YOUR VPN 900% MORE SECURE,  
AND 300% MORE REDUNDANT,  
RELIABLE, AND FAST



Fault tolerance for  
Remote VPN users  
and WAN  
Optimization and  
Acceleration

FatPipe MPVPN, a patented\* router clustering device, is an essential part of Disaster Recovery and Business Continuity Planning for Virtual Private Network (VPN) connectivity. It makes any VPN up to 900% more secure and 300% times more reliable, redundant and faster. MPVPN can take WANs with an uptime of 99.5% or less and make them 99.99988% or higher, providing a virtually infallible WAN.

MPVPN dynamically balances load over multiple lines and ISPs without the need for BGP programming. MPVPN aggregates up to 2 Gbps of bandwidth, giving you all the reliability and speed you need to keep your VPN up and running despite failures of service, line, software or hardware.



FatPipe MPVPN aggregates two or more data lines of any type and in any combination to provide the highest levels of security, redundancy and speed for VPNs. FatPipe MPVPN enables a high level of fault tolerance and reliability for your VPN using patented technology that keeps your mission critical VPN up and running.

Security of data transmission is increased up to nine times with FatPipe's patented MPSec™ technology. MPSec breaks each encrypted data stream down to the packet level, and then sends the packets over multiple connections, and reassembles the packets at the receiving end. MPSec makes it virtually impossible for hackers or intruders to trap data and decrypt confidential information.

FatPipe MPVPN add-on features further enhances the reliability of your VPN. FatPipe VPN Site Failover is a clear fit for companies with Disaster Recovery sites as it can failover VPN traffic from one site to another for excellent, real-time Business Continuity. You can also create and configure VPN tunnels from the MPVPN using the FatPipe VPN feature. It comes with the ability to automatically failover tunnels between a main site and mobile users also known as iRoad Warriors,† for the ultimate in business continuity planning.

## ADDITIONAL SECURITY, EXTREME AVAILABILITY, FAULT TOLERANCE & INCREASED BANDWIDTH FOR YOUR VPN

## YOU CAN NOT AFFORD TO GO DOWN

- 76 percent of businesses surveyed expressed that the risk of business interruption drives them to implement a Business Continuity Plan\*
- 80 percent of executives said it was more important to their organization to have an information infrastructure that is always available rather than being able to recover after a business disruption. \*\*\*
- 51 percent of businesses surveyed are driven to create and implement Business Continuity plans because they are fearful of a loss of critical data due to an unexpected disruption in communication. \*
- The main contributors of Network Downtime are:  
Link Failures (fiber cuts, network congestion) - 32 percent  
Router Failure (software / hardware faults, denial-of-service attacks) - 23 percent  
Router Maintenance (software and hardware upgrades, configuration errors) - 36 percent  
Miscellaneous Failure - 9 percent \*\*

References: \* Business Continuity: Implementing Disaster Recovery Strategies and Technologies, Aberdeen Group; March 2008 \*\* ATX Communications, White Paper: Essentials of Managed WAN Services: Keys to Reliability, Performance and Economy; April 2006 \*\*\* IFortune 1000 Preparedness for Uninterrupted Access to Critical Information Assessed, Continuity Central.com based on research from Beacon Technology Partners 2006

## FEATURES & BENEFITS

- **Additional Security with FatPipe's patented MPSec** - Provides up to nine times more security, making it virtually impossible for intruders to trap and decrypt information transmitted over your VPN.
- **Complete Inbound Redundancy with FatPipe SmartDNS** - Patent-pending technology intelligently balances load across all available lines and provides for redundancy of inbound traffic.
- **Dynamic Bandwidth Utilization** - Select from several load balancing methods including Fastest Route, Weighted, and Spillover Load Balancing.
- **Increased Bandwidth** - Aggregate multiple connections of similar or dissimilar speeds without BGP programming, saving you money, time and resources.
- **Business Continuity** - Supports multi-homing connections over multiple ISPs without the need to make significant changes to your network infrastructure, providing the intelligent and automatic failover you need for Business Continuity.
- **Aggregates Multiple Lines Without ISP Involvement** - Unlike BGP, MPVPN can utilize lines such as MPLS, cable, ADSL, wireless, from separate ISPs without their cooperation.
- **Easy Installation and Management** - MPVPN works with your existing VPN infrastructure, and does not require expensive routers with programming capabilities. It can utilize any combination of any type of lines and is easy to install and manage using its intuitive graphical user interface (GUI).
- **Policy Routing** - Provides Administrators the tools to direct routing criteria based on application, port or IP. Use the Policy Routing Rule Scheduler to program policy routes within your specified timeframe, scheduling policies to activate or deactivate at specified times and days of the week.
- **Basic Firewall** - You can Allow or Deny traffic matching an inbound or outbound policy rule.
- **Full WARP functionality** - MPVPN incorporates all of the features and benefits of FatPipe WARP.

## AVAILABLE ADD-ON FEATURES & FUNCTIONS

- **FatPipe Quality of Service (QoS)** - Gives you granular control of how traffic flows on your network. You can prioritize traffic and divide bandwidth for mission critical applications (such as VoIP) or by IP or Port.
- **Site Load Balancing/Failover** - Enhances your company's Disaster Recovery/Business Continuity solution by providing automatic failover and load balancing capability between two or more locations.
- **FatPipe VPN** - Allows you to configure VPN tunnels with or between any standard IPSec VPN peer and mobile users.
- **FatPipe VPN Failover** - Fails over VPN tunnels from one site to another.
- **FatPipe VPN Road Warrior Failover** - Provides redundancy for remote VPN sites and mobile users ensuring VPN connectivity at every level.
- **WAN Optimization** - This feature significantly increases existing network capacity translating to real cost savings.
- **FatPipe Central Manager** - Update all MPSec tables for multiple sites from a single location and manage global upgrades for multiple sites from a central location.
- **FatPipe Unit Failover** - Allows you to have a standby unit for backup.