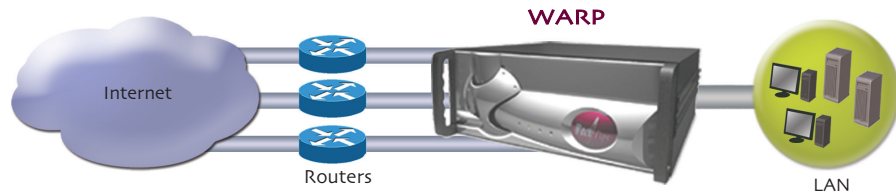


# FatPipe WAN Redundancy, High Speed, Fail-Proof Products

## WARP

- Intelligent and automatic outbound aggregation and line failover
- SmartDNS for automatic inbound line failover and load balancing
- Inbound Policy conserves IP addresses
- Outbound Policy Routing allows users to set rules for outbound traffic
- Multi-homing capabilities
- No BGP Programming Needed

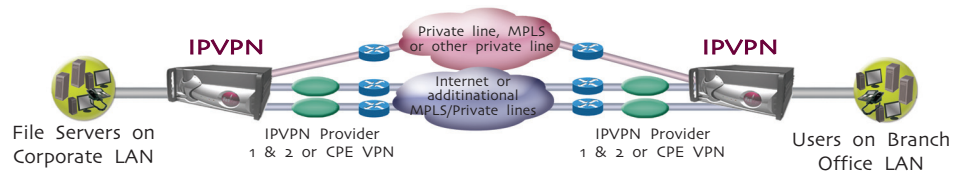
FatPipe WARP aggregates lines over multiple ISPs and backbones for the world's highest redundancy, reliability and speed of bidirectional IP traffic. WARP is used by ASPs and corporations that want redundancy for access to internal servers. No BGP programming or hardware at the ISP needed.



## MPVPN/IPVPN

- Includes all features listed for FatPipe WARP
- Works with all VPNs, routers and ISPs
- Provides redundancy for VPN tunnels
- Up to nine times more secure transmission
- Highest redundancy and reliability for managed or CPE based VPNs
- Facilitates Frame to VPN migration
- Works with MPLS based VPNs

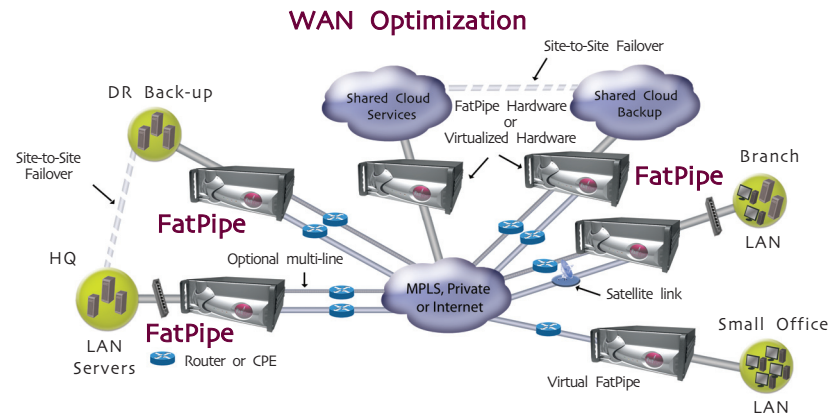
MPVPN and IPVPN are unique products that work with multiple managed service providers and/or CPE based VPNs to provide the highest level of reliability, redundancy, speed and security for WAN/VPN transmissions. MPVPN/IPVPN dynamically balances bidirectional IP traffic over multiple connections, without BGP.



## WAN Optimization

- FatPipe WAN Optimization is available in Bridge or Multiline configurations
- FatPipe is the only company in the market that can optimize traffic over multiple lines
- Optimizes traffic based on application/protocol type, including TCP and UDP, HTTP, HTTPS, CIFS, SMTP, IMAP, Citrix, SharePoint, RDP, FTP and others
- SatBooster optimizes high latency links, improving performance. Includes web content blocking and Lossy compression
- Layer 7 and Layer 3 QoS allows end users to set priorities and guarantee bandwidth based on application, IP or port. Additionally, customers can also easily schedule policy routers and QoS rules at any time at specific times and days

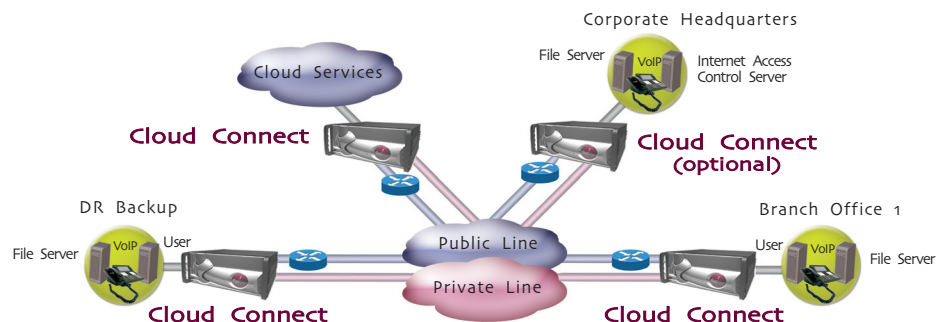
FatPipe offers a full suite of WAN Optimization tool that increases speeds up to 75 times using single or multiple lines. FatPipe optimizes traffic flow using caching, de-duplication, Quality of service (QoS), and compression techniques. FatPipe WAN optimization appreciably increases WAN utilization, providing effective use of WAN bandwidth.



## Cloud Connect

- Facilitates a secure, reliable and redundant WAN utilizing existing private, hub-and-spoke networks and inexpensive Internet lines while providing centralized control over WAN traffic
- Works with Surf Control and WebSense
- Ability to work with 2-15 lines at any location including wireless and local cable without BGP programming.
- Bypass connectivity issues by using a router-clustering device at each location
- Hub and spoke WAN models with offices in disparate locations can optimize traffic between sites

FatPipe Cloud connect is designed to support multi-branch office environments providing WAN reliability, redundancy, and speed as well as web access control. It allows retail and hospitality corporations or any company with a hub-and-spoke Wide Area Network to free up private bandwidth usage while maintaining centralized control of web traffic by utilizing local lines at remote locations.

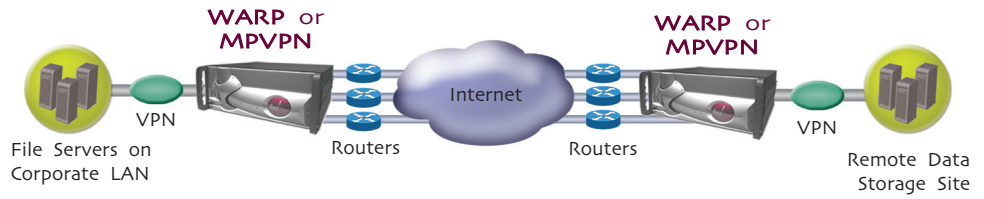


FatPipe Networks - 4455 South 700 East, Salt Lake City, Utah 84107 • www.fatpipe.com  
info@fatpipeinc.com • Tel: 800-724-8521 • Fax: 801-281-3434

©FatPipe Networks 2012. \*Patented and additional patents pending. US Patent Numbers: 6,253,247; 6,295,276; 7,269,143; 6,775,235; 7,406,048; 7,444,506; 6,493,341 and 7,877,510. US Registered Trade Mark # 2,236,238

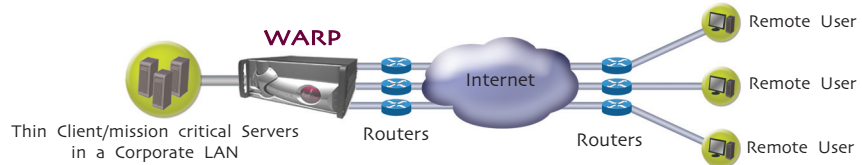
**Need:** Easy to implement disaster recovery solution to prevent WAN downtime.

**Solution:** Integrate a FatPipe router-clustering product into an existing WAN to achieve the highest levels of fault tolerance, availability, security and speed. This is achieved by utilizing two or more data lines from the same or different ISPs, without BGP or the need to set up hardware at the ISP site.



**Need:** Reliable "high availability" connection for mission critical servers, including web, database, Thin Client, and email.

**Solution:** Use a FatPipe unit to provide redundancy and high availability "always up" connections to the Thin Client server.



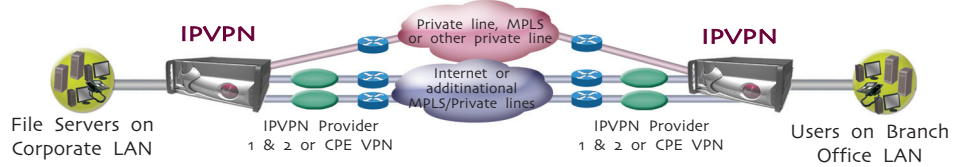
**Need:** Redundancy, additional security and speed for VPN.

**Solution:** Use FatPipe's easy to implement MPVPN to make a VPN three times more reliable, redundant and fast, and up to nine times more secure. MPVPN uses the patented security feature, MPSec™, which prevents unwanted intruders from obtaining confidential information.



**Need:** A product that provides load balancing and reliability for WANs across a combination of private and public, (any combination of wired and/or wireless connections), VPN and MPLS networks.

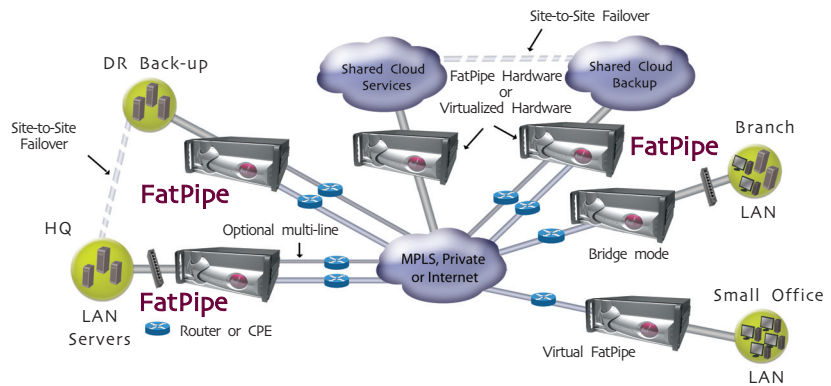
**Solution:** Use FatPipe multi-site hybrid solutions products to enable reliable and secure inter-office connectivity utilizing a hybrid WAN to bring down costs while improving reliability, speed and security of corporate/data center and branch office connectivity.



**Need:** A company requires greater bandwidth utilization to efficiently deliver information between offices.

**Solution:** The company integrates FatPipe WAN Optimization bridge mode at the branch office and multiple line WAN Optimization at the HQ to significantly increase its network capacity and speed of data transmission. Caching, compression, QoS, de-duplication and acceleration increase speed of data transmission and productivity levels, reducing WAN traffic between 50% and 90%, resulting in significant cost savings for the company.

### WAN Optimization



**Need:** A company wants a single web access control device at a centralized location to manage corporate-wide web access policies, but wants to avoid bottlenecking issues and the prohibitive costs associated with increasing bandwidth demands.

**Solution:** Cloud connect redirects web requests from remote locations and sends them to the central location for authorization. If allowed, all further traffic related to the request is handled by local Internet lines at each remote site.

