

FatPipe Super UTM

Network Security, Firewall, VPN, IDS/IPS, Web Filtering, Anti-Spam and
Anti-Virus, Redundancy, Speed and Dynamic Load Balancing

ALL-IN-ONE PRODUCT PROVIDING
NETWORK SECURITY PLUS DYNAMIC
LOAD BALANCING AND THE HIGHEST
LEVEL OF WAN REDUNDANCY

The logo features the word "FAT" in large, bold, red 3D block letters. To its right, the word "Pipe" is written in a red, cursive script font. A thin, glowing green ring orbits around the "Pipe" text. Below this, the words "Super UTM" are written in a smaller, red, 3D block font.

FAT Pipe
Super UTM

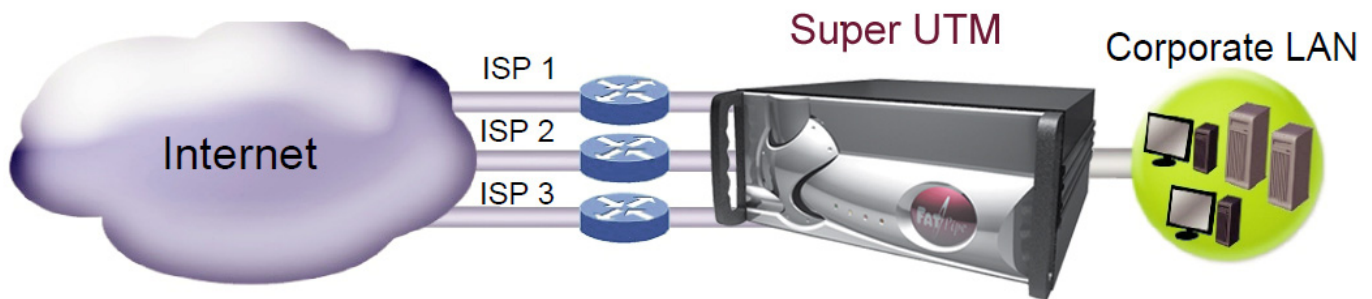
WAN Redundancy,
VPN, IDS/IPS, Anti-
Spam, Web Filtering
and DHCP

The creator and multi-patent holder of WAN redundancy and optimization products is proud to introduce FatPipe Super UTM, a comprehensive device that provides network security and Internet / WAN redundancy. FatPipe Super UTM is a network gateway device that consolidates key security services, including Firewall, VPN, Web/URL filtering, content filter and IDS-IPS (Intrusion Prevention and Detection Services).

In addition to securing the network, Super UTM also manages network usage. It includes a mail server, spam protection, gateway antivirus, log analyzers and a DHCP server. FatPipe Super UTM provides security services that safeguard networks from viruses, phishing attacks, direct denial of service attacks, and distributed denial of service attacks.

What makes FatPipe Super UTM distinctively different from all other UTM's is that it also provides dynamic load balancing capabilities along with intelligent WAN failover through the aggregation of multiple lines.

FatPipe Super UTM - an All in One Product



Industry analysts have noted that the rapid rise in blended threats combined with widespread access to information has greatly contributed to the need for flexible and highly integrated functionality of multiple security features in one box. In addition to security threats from blended attacks, administrators also face increased network slowdowns and a lack of prioritization of traffic moving through the network.

Many slowdowns are due to having too many users engaged in non-productive activities such as peer-to-peer file downloading, instant messaging, and multimedia applications. These types of activities contribute to productivity losses and unnecessary bandwidth consumption, and they also open holes into the internal network. As a result, networks are vulnerable to malwares, spyware, key loggers, and VoIP attacks are some common threats that are present in today's networks.

FatPipe Super UTM is an all-in-one product that not only guards against intrusion but also performs content filtering, spam filtering, intrusion prevention, and anti-virus duties traditionally handled by multiple components. FatPipe technology leads the way to providing the highest level of redundancy for any type of WAN.



FEATURES

- **IDS- FatPipe Super UTM** offers IDS and IPS modes. The IDS mode works in inline mode. It watches packets of data traversing the network, compares the traffic to the configured rules, and will set off an alarm if it detects anything suspicious. IDS can detect several types of malicious traffic that would slip through a typical firewall.
- **IPS - In IPS mode**, FatPipe Super UTM will stop malicious traffic from invading the enterprise. IPS actively shuts down attempted attacks.
- **MPSec - A patented security feature** from FatPipe provides up to nine times more security in addition to IPsec.
- **Web Filter** – FatPipe Super UTM provides the ability to restrict and log web access by various users and groups of users in an organization. The restriction will be based on both URL and content filtering methods.
- **Mail Server** – (optional) FatPipe Super UTM provides a mail server feature to route and deliver electronic mail. It is secure, fast and easy to administer. FatPipe mail server is resistant to buffer overflows, and can handle large amount of e-mail. FatPipe mail server feature enables users to access mail through MAP/IMAPS, POP3/POP3-S protocols.
- **Anti Virus and Anti Spam** - FatPipe mail server comes with an antivirus engine designed for detecting Trojans, viruses, malware and other malicious threats. It has an anti-spam engine that uses a wide variety of local and network tests to identify spam signatures. It also comes with a web mail package that is easy to configure and has all the functionality you would want from an email client, including strong MIME support, address books, and folder manipulation.
- **DHCP Server** – Assigns IP addresses and host configuration information to devices on the Local Area Network.
- **High Availability** – An automatic unit failover option is available for customers that want a standby unit to backup the active unit at the CPE.

BENEFITS

- **All-in-One Device** – FatPipe Super UTM provides all the network security and Internet/WAN redundancy a company needs in a single box. It includes IDS/IPS, a mail server, web filtering, VPN, QoS, DHCP server, load balancing, line failover capability, and more.
- **Lowest Cost of Ownership** – FatPipe Super UTM reduces the total cost of ownership significantly by eliminating costs associated with purchasing and maintaining separate hardware for separate features and services.
- **Increased Network Security** – FatPipe Super UTM markedly increases network security by combining IDS/IPS and Web Filter in tandem with MPsec. Web Filter combined with IDS/IPS increases network security significantly.
- **Dynamic Bandwidth Utilization** – Several load balancing methods including Fastest Route, Weighted, and Spillover Load Balancing are available in addition to policy routing and QoS.
- **Increased Bandwidth** – Aggregates multiple connections of similar or dissimilar speeds without BGP programming saves money, time and resources.
- **Control Network Usage** – FatPipe Super UTM controls network usage with the help of web and content filtering rules. **Granular Policy Management** – FatPipe Super UTM provides Administrators tools to direct routing criteria based on application, port or IP. The Policy Routing Rule Scheduler enables them to schedule policies at specified times and days of the week.
- **Network Management** – FatPipe Super UTM monitors network speed and usage. Fully supports SNMP v2 and MIB-II compliant.

ADD-ON-FEATURES

- **WAN Optimization** – appreciably increases WAN utilization, providing effective use of WAN bandwidth by caching and compression, sharply reducing redundant data on a WAN. Get between 4 to 20 times compression and reduction in WAN traffic.
- **FatPipe QoS** give you further granular control of how traffic flows on your network, allowing you to prioritize traffic and divide and guarantee bandwidth for mission critical applications (such as VoIP), or by IP or port.
- **FatPipe Site Load Balancing / Failover** – Enhances Disaster Recovery/Business Continuity solutions by providing failover between two or more sites as well as global load balancing of IP traffic between sites to maximize bandwidth usage.
- **FatPipe VPN** – Configure VPN tunnels with or between any standard IPSEC VPN peer and mobile users.
- **SmartDNS** – A patented technology from FatPipe, provides the highest level of failover for inbound traffic, and provides for inbound load balancing.*
- **Road Warrior** – FatPipe VPN includes failover for mobile users – Road Warriors can access company resources remotely through a secure IPsec tunnel.

Super UTM

FatPipe Super UTM provides network security plus dynamic load balancing and the highest level of WAN redundancy



UP TO 10 Gbps SPEEDS

LOAD BALANCING

- Round Robin
- Response Time
- Fastest Route
- Weighted
- Spillover Load Balancing
- On Failure

MANAGEMENT

- Policy Routing
- FatPipe Quality of Service (QoS)*
- Firewall
- Graphical User Interface
- Network Configuration
- Emergency Paging and e-mail Alerts
- Automatic Failover
- Bandwidth Reporting
- SNMP Ready
- High Availability*
- Web Filter*
- Anti-Spam***
- Anti Virus***
- Mail Server
- SmartDNS**

SECURITY

- Firewall
- IDS/IPS***
- Road Warrior*
- Inbound Policy
- VPN*

WARRANTY

- 1 year full hardware warranty
- Extended hardware warranty available

NETWORK INTERFACE

- Four 10/100/1000 Ethernet Interfaces
- Additional WAN port(s) upgrade available
- Supports Wireless
- Up to 12 WAN ports per unit
- Industry standard 4U and 1U rack-mount chassis - high reliability, fast cooling and Industrial design

* Add-on feature

** Add-on to stand alone Super UTM, standard for add on to a current router clustering device

*** Subscription



FatPipe Networks
4455 South 700 East, 1st Floor, Salt Lake City, Utah 84107
www.fatpipeinc.com • Info@fatpipeinc.com
Tel: 800.724.8521 • 801.281.3434 • Fax: 801.281.0317

FatPipe Networks™, SYMPHONY, and MPsec™ are trademarks or registered trademarks of Ragula Systems Development Company d.b.a. FatPipe Networks. All other product names mentioned herein are trademarks of their respective owners. Partner benefits and offerings subject to change ©FatPipe Networks 2012 *Patented and additional patents pending. US Patent Numbers: 6,253,247; 6,295,276; 7,269,143; 6,775,235; 7,406,048; 7,444,506; 6,493,341 and 7,877,510. US Registered Trade Mark # 2,236,238