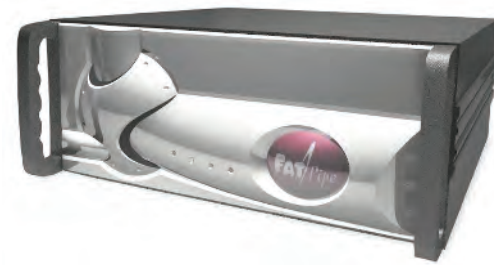


# WARP

FatPipe WARP provides automatic failover of Internet connections, dynamic bandwidth utilization, and efficient data routing tools for business. FatPipe WARP aggregates multiple data lines of any combination, speed or type from different ISPs providing an effective and economical solution for business continuity.



## UP TO 2Gbps SPEEDS

### LOAD BALANCING

- Round Robin
- Response Time
- Fastest Route
- Weighted
- Spill over Load Balancing
- On Failure

### MANAGEMENT

- Policy Routing
- Fatpipe Quality of Service (QoS)\*
- Basic Firewall
- Graphic User interface
- Network configuration
- Emergency paging and e-mail alerts
- Automatic failover
- Bandwidth Reporting
- SNMP Ready
- Fatpipe Site Load Balancing\*

\* Add-on feature

### SECURITY

- Inherent NAT-based Firewall
- Inbound Policy
- Fatpipe VPN

### WARRANTY

- 1 year full hardware warranty
- Extended hardware warranty available

### NETWORK INTERFACE

- Four 10/100/1000 Ethernet Interfaces
- Additional WAN port(s) upgrade available
- Support 3-G Wireless
- Up to 12 WAN ports per unit
- Industry standard 4U and 1U rack-mount chassis -high reliability, fast cooling and industrial design



FatPipe Networks  
4455 South 700 East, 1st Floor, Salt Lake City, Utah 84107  
www.fatpipeinc.com - Info@fatpipeinc.com  
Tel: 800.724.8521 - 801.281.3434 - Fax: 801.281.0317

FatPipe Networks™, MPVPN®, and MPsec™ are trademarks or registered trademarks of Ragula Systems Development Company d.b.a. FatPipe Networks. All other product names mentioned herein are trademarks of their respective owners. Partner benefits and offerings subject to change © FatPipe Networks 2012 \*Patented and additional patents pending. US Patent Numbers: 6,253,247; 6,295,276; 7,269,143; 6,775,235; 7,406,048; 7,444,506; 6,493,341 and 7,877,510. US Registered Trade Mark # 2,236,238

# FatPipe WARP

Redundancy, Reliability, Speed, and Dynamic Load Balancing of Bidirectional Traffic

MAKE YOUR WAN 300% MORE REDUNDANT,  
RELIABLE AND FAST FOR BIDIRECTIONAL IP  
TRAFFIC FOR BUSINESS CONTINUITY

FAT Pipe  
WARP

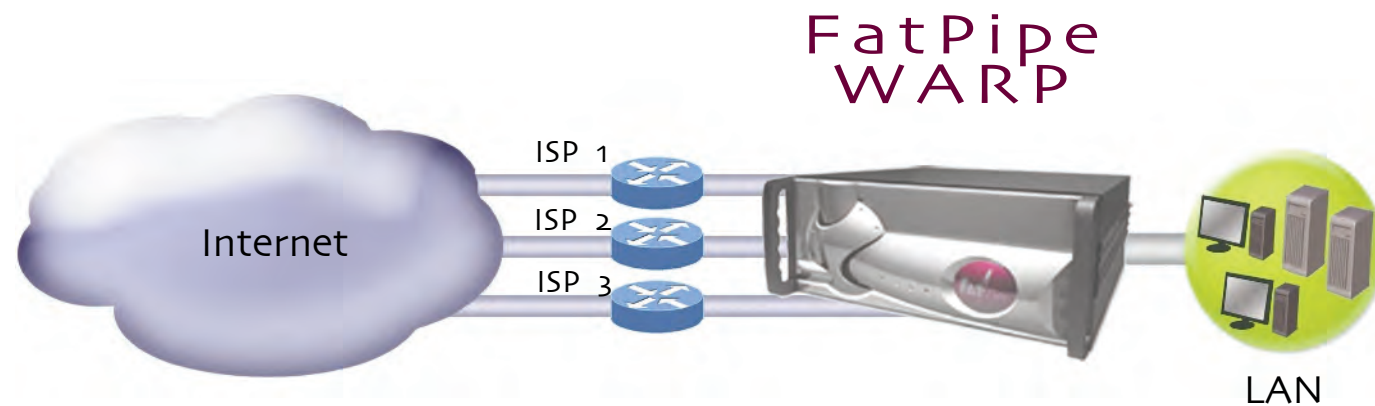
IPsec, QoS, Site  
Load Balancing,  
are available  
add-ons

FatPipe Networks invented the concept of router-clustering, which provides the highest level of reliability, redundancy and speed of Internet traffic for Business Continuity and communications. FatPipe WARP achieves fault tolerance for companies by creating an easy method of combining two or more Internet connections of any kind over multiple ISPs. FatPipe utilizes all paths when the lines are up and running, dynamically balancing traffic over the multiple lines, and intelligently failing over inbound and outbound IP traffic when ISP services and/or components fail.

Companies can host mission critical servers - such as web, database and email servers - with confidence that access to them will not be interrupted due to failed ISP services, components or congestion at peak hours.

WARP features FatPipe's patented and patent pending technology, SmartDNS, which efficiently balances inbound load over multiple lines and intelligently and automatically fails over Internet traffic when needed.

WARP also provides powerful features, such as multiple options for load balancing, and policy routing tools that control how data flows on networks. FatPipe WARP also has various add-on tools including Quality of Service (QoS) and VPN, which gives you enhanced control capabilities.



## Redundancy, Reliability, Speed for Business Continuity

Partner benefits and offerings subject to change ©FatPipe Networks 2012 \*Patented and additional patents pending. US Patent Numbers: 6,253,247; 6,295,276; 7,269,143; 6,775,235; 7,406,048; 7,444,506; 6,493,341 and 7,877,510. US Registered Trade Mark # 2,236,238

FatPipe WARP is an ideal solution for companies that require high levels of redundancy and availability for their WAN networks as well as maximum bandwidth utilization. Companies that host internal servers that are accessed from outside their LANs, such as web, Citrix, email and database servers, require robust and redundant WANs to keep their businesses running. This reduces revenue and productivity losses due to Internet downtime.

WARP provides the highest level of fault tolerance for WAN infrastructures, ensuring that inbound and outbound traffic reach their destination even when one ISP or WAN component fails.

### YOU CANNOT AFFORD TO GO DOWN

Network outages and degradation cause significant losses in productivity and revenue.

- A study of downtime at 85 large organizations (over 1,000 employees), found an average of over \$32 million in revenue and productivity losses. Source - Infonetics Research, The Cost of Downtime
- One third of U.S. businesses face the loss of critical data or operational capability in the wake of a disaster, unless investments toward disaster preparedness planning are made. Source - Gartner Group; U.S. Firms Unprepared for Disasters
- The growth of network complexity has produced many more potential points of degradation and failure. Source - Infonetics Research, The Cost of Downtime
- The main contributors of Network Downtime are:
  - Link Failures (fiber cuts, network congestion) - 32 percent
  - Router Failure (software/hardware faults, denial-of-service attacks) - 23 percent
  - Router Maintenance (software and hardware upgrades, configuration errors) - 36 percent
  - Miscellaneous Failure - 9 percent

\*\* Source: ATX Communications, White Paper: Essentials of Managed WAN Services: Keys to Reliability, Performance and Economy; April 2006

### FEATURES & BENEFITS

- **Complete Inbound Redundancy with FatPipe SmartDNS** - Patent-pending technology intelligently balances load across all available lines and provides for redundancy of inbound IP traffic and access to internal servers including Citrix, web, SCM, CRM, database and e-mail servers.
- **Dynamic Bandwidth Utilization** - Select from several load balancing methods including Fastest Route, Weighted, and Spillover Load Balancing.
- **Increased Bandwidth** - Aggregates multiple connections of similar or dissimilar speeds without BGP programming, saving you money, time and resources.
- **Business Continuity** - Supports multi-homing connections over multiple ISPs without the need to make significant changes to your network infrastructure, providing intelligent and automatic failover for business continuity.
- **Network Management** - Fully supports Simple Network Management Protocol (SNMP), v2 and MIB-I compliant.
- **Policy Routing** - Provides Administrators the tools to direct routing criteria based on application, port or IP. Use the Policy Routing Rule Scheduler to program policy routes within your specified time frame, scheduling policies to activate or deactivate at specified times and days of the week.
- **Easy Installation and Management** - WARP works with your existing infrastructure, and does not require expensive routers with programming capabilities. It can utilize any combination of lines and is easy to install and manage using its intuitive graphical user interface (GUI).
- **Unit Failover** - An automatic unit failover option is available to customers that want a standby unit to backup the active unit.

### AVAILABLE ADD-ON FEATURES & FUNCTIONS

- **FatPipe Quality of Service (QoS)** - can help you optimize the efficiency of your Internet connection by providing tools to control congestion and prioritize data for inbound and outbound traffic.
- **FatPipe Site Load Balancing/Failover** - Enhances your Disaster Recovery/business continuity solution by providing failover between two or more sites as well as global load balancing of IP traffic between sites to maximize bandwidth utilization.
- **FatPipe VPN** - Allows you to configure VPN tunnels with any standard IPsec VPN peer for site-to-site as well as remote user VPN tunnels.
- **Road Warrior** - FatPipe VPN includes failover for Road Warriors - mobile users can access company resources remotely through a secure IPsec tunnel.